

液控单向阀 Hydraulic-Operated Check Valve



功能说明 Function Instruction

液控单向阀是只允许液流向一个方向流动，反向开启则必须通过液压控制来实现的单向阀。

液控单向阀可用作两通开关阀，也可用作保压阀或立式液压缸的支撑阀。

Hydraulic-operated check valve allows oil to flow in only one direction, and it can not allow the oil to flow in the opposite direction unless it uses the hydraulic control.

Hydraulic-operated check valve can be used as two way on-off valve, and also can be seen as a pressure retaining valve or a sustaining valve of the standing fluid cylinders.

型号说明 Model description

AxY - x x x - x / x 50 *

液控单向阀
Hydraulic-operated check valve
A1Y 内泄式
Internal discharge type
A2Y 外泄式
External discharge type

规格 Specification

板式 Plate connecting type	管式 Pipe connecting type	螺纹接口 Screw thread connector
03 10通径NS10	10 10通径NS10	G1/2"或orM22x1.5
	15 15通径NS15	G3/4"或orM27x2
06 20通径NS20	20 20通径NS20	G1"或orM33x2
	25 25通径NS25	G1 1/4"或orM42x2
10 30通径NS30	30 30通径NS30	G1 1/2"或orM48x2

省略Omit 板式Plate connecting type
G 管式连接Threaded connection - G螺纹Screw thread
G2 管式连接Threaded connection - M螺纹Screw thread

A 带先导阀With pilot-operated valve
B 不带先导阀Without pilot-operated valve

附加说明
Pipeline

系列号
Serial number

密封材料
Seal material
省略 NBR密封Omit NBR seal
V FPM密封 FPM seal

开启压力
Opening pressure
a 0.15MPa
b 0.3MPa
c 0.6MPa
d 1.0MPa

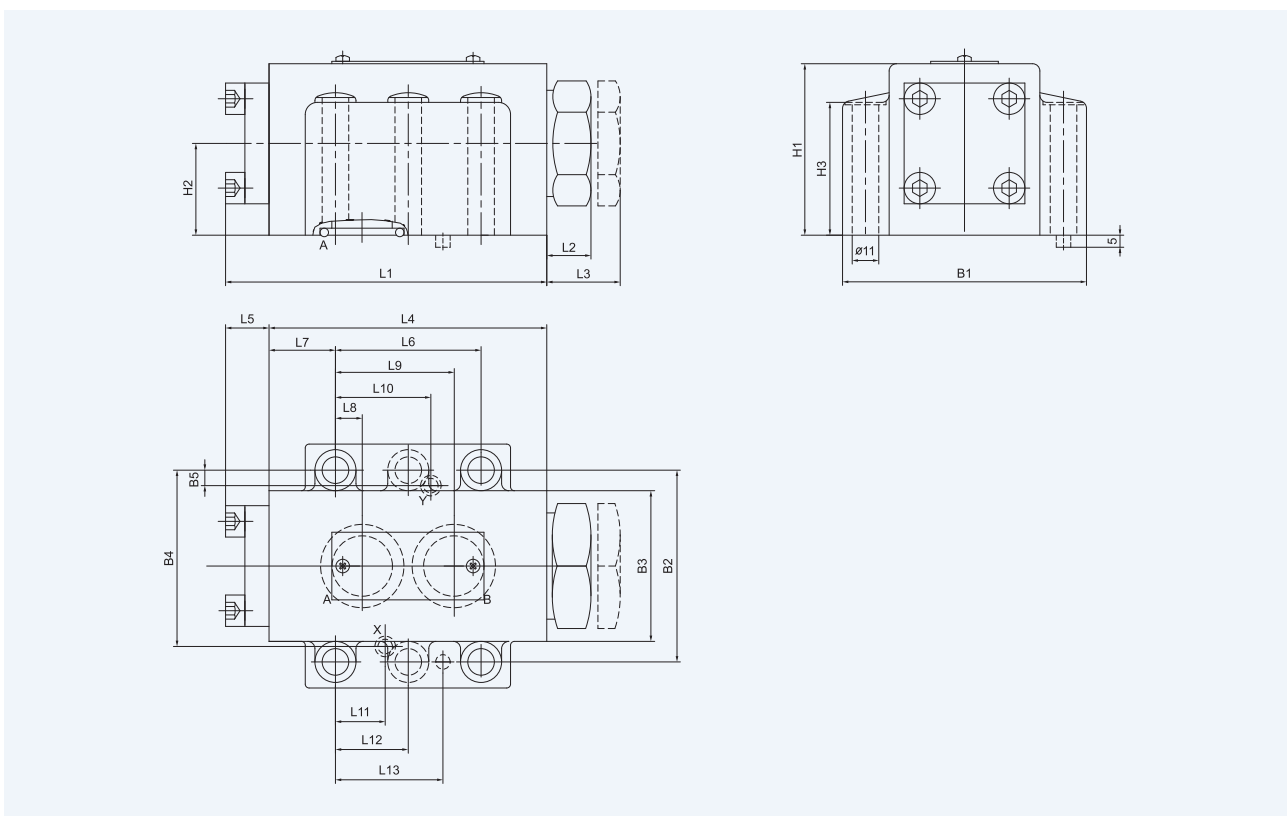
机能符号 Code symbol



技术参数 Technical specification

规格Specification	参数Parameters	03	06	10
最高工作压力Maximum working pressure(MPa)		0.5 ~ 31.5		
控制压力Control pressure(MPa)		0.5 ~ 31.5		
最大流量Maximum flow(L/min)		150	350	550
工作介质Working fluid		矿物质液压油、磷酸酯Mineral oil, phosphate-ester		
介质温度范围Fluid temp()		-20 ~ 70		
介质粘度范围(mm ² /s)		2.8 ~ 380		
开启压力Opening pressure(MPa)		a: 0.15 b: 0.3 c: 0.6 d: 1.0		
重量Weight(Kg)		1.8	4.7	7.8

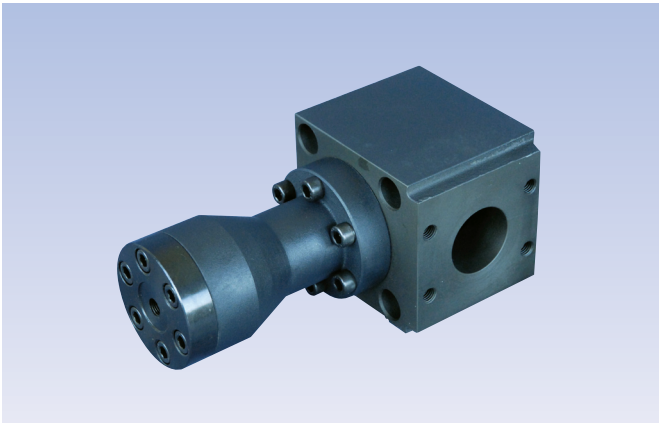
外形尺寸 Mounting size



阀型号 Model	规格 Specification	L1	L2	L3	L4	L5	L6	L7	L8	L9	L10	L11	L12	L13
A1Y	03	102	14.3	15.5	89	13	42.9	18.5	7.2	35.8	-	21.5	-	31.8
	06	133	18.3	47.7	115	18	60.3	27.5	11.1	49.2	-	20.6	-	44.5
	10	156	35.6	46.1	134	22.1	84.2	39	16.7	67.5	-	24.6	42.1	62.7
A2Y	03	102	14.3	15.5	89	13	42.9	18.5	7.2	35.8	21.5	21.5	-	31.8
	06	133	18.3	47.7	115	18	60.3	27.5	11.1	49.2	39.5	20.6	-	44.5
	10	156	35.6	46.1	134	22.1	84.2	39	16.7	67.5	59.5	24.6	42.1	62.7

阀型号 Model	规格 Specification	B1	B2	B3	B4	B5	H1	H2	H3	规格 Specification	安装螺钉 Mounting screw	拧紧力矩 Tighten torque moment
A1Y	03	84	66.7	44	58.8	-	51	29	36	规格 Specification	安装螺钉 Mounting screw	拧紧力矩 Tighten torque moment
	06	101	79.4	62.4	73	-	71	38	55			
	10	117	96.8	77	92.8	-	85	42.5	70			
A2Y	03	84	66.7	44	58.8	7.9	51	29	36	AxY-03	4 - M10x50 - 10.9	75Nm
	06	101	79.4	62.4	73	6.4	71	38	55	AxY-06	4 - M10x70 - 10.9	75Nm
	10	117	96.8	77	92.8	3.8	85	42.5	70	AxY-10	6 - M10x80 - 10.9	75Nm

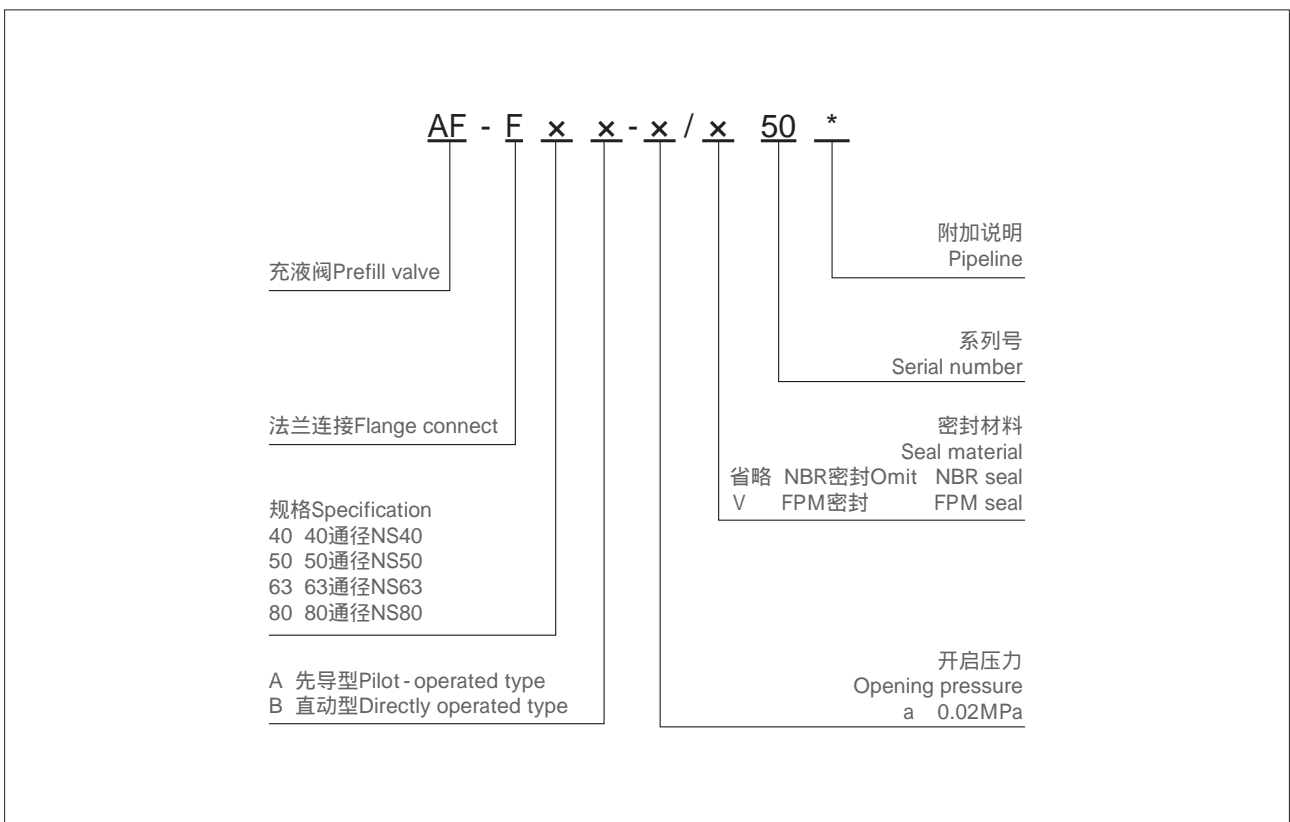
充液阀 Prefill Valve



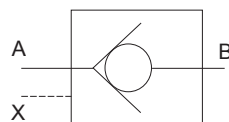
功能说明 Function Instruction

充液阀 Prefill valve

型号说明 Model description



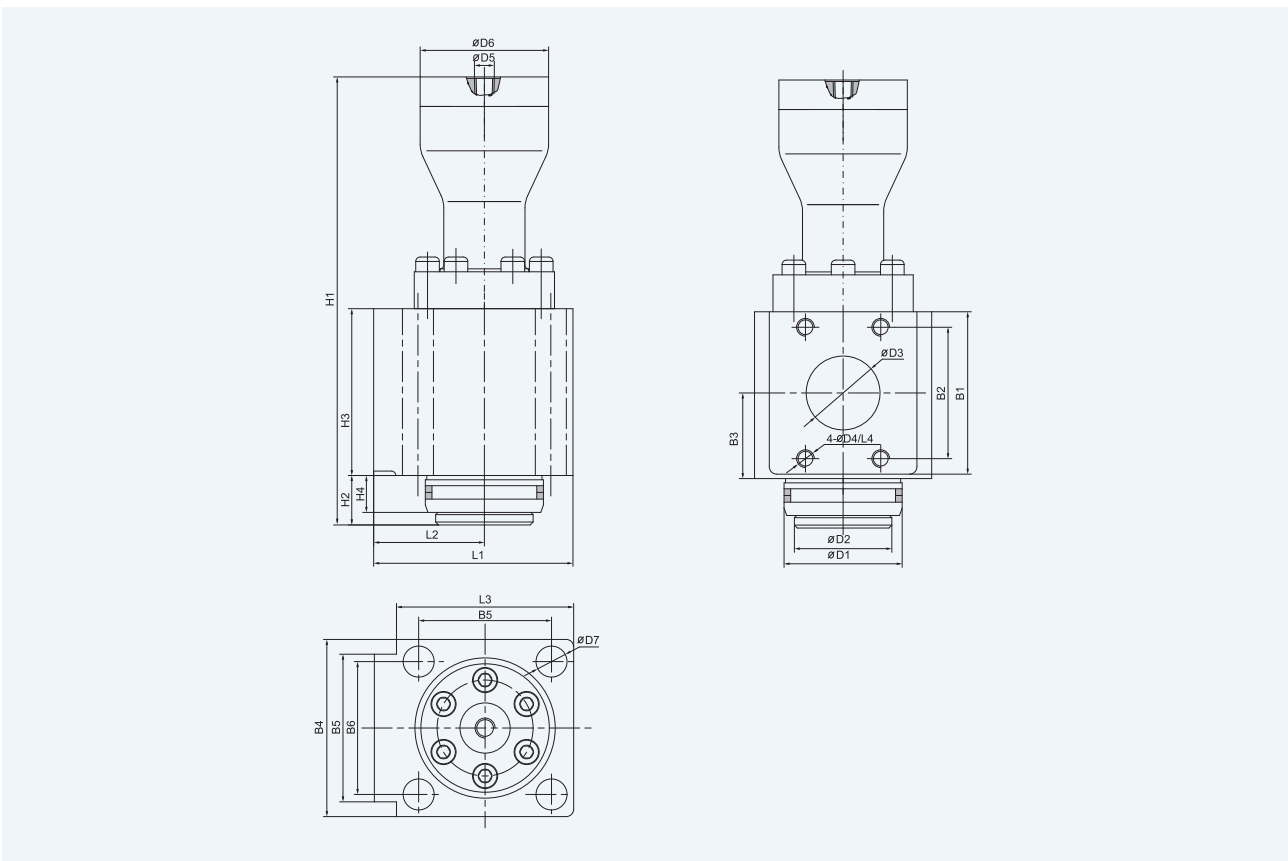
机能符号 Code symbol



技术参数 Technical specification

规格Specification	参数Parameters	40	50	63	80
最高工作压力 Maximum working pressure(MPa)	A		~ 1.6		
	B		~ 31.5		
	X		~ 31.5		
最大流量Maximum flow(L/min)		-			
工作介质Working fluid		矿物质液压油、磷酸酯Mineral oil, phosphate-ester			
介质温度范围Fluid temp()		-20 ~ 70			
介质粘度范围Viscosity(mm ² /s)		2.8 ~ 380			
开启压力Opening pressure(MPa)		a: 0.02			
重量Weight(Kg)		-	14	-	32

外形尺寸 Mounting size



规格Specification	参数Parameter	L1	L2	L3	L4	B1	B2	B3	B4	B5	B6	H1	H2	H3	H4
AF - 50		135	75	120	16	110	89	58	120	100	90	303.5	33.5	113	25
AF - 80		192	102	180	20	157	106.5	77.5	180	115	130	357.5	40.5	160	30

规格Specification	参数Parameter	D1	D2	D3	D4	D5	D6	D7	规格Specification	安装螺钉 Mounting screw	拧紧力矩 Tighten torquemoment
AF - 50		95f7	66	50	M12	Z1/4"	87	21	AF - 50	4 - M20x140 - 10.9	430Nm
AF - 80		115f7	97	76	M16	Z1/4"	87	31	AF - 80	4 - M30x200 - 10.9	1640Nm